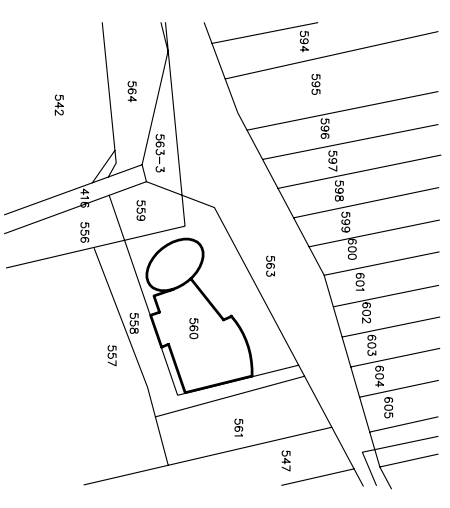


圖名	TITLE
地籍套繪圖	位置圖
面積計算表	
案號	PROJECT
04W-01F	
圖面修正	DATE
審核	APPROVED
設計	DESIGNER
繪圖	DESIGNED
建築師	ARCHITECT

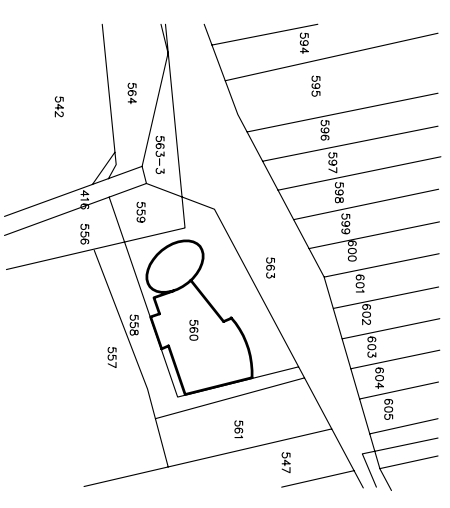
圖號	A1-2
張數	2/43

面積計算及造價統計表	
起造人	嘉義市竹村段560地號
基地座落	560地號=307.72㎡
基地面積	307.72㎡
同意使用範圍面積	
使用分區	
樓層面積	各層樓地板面積
壹層	(6.55+8.073)×8.825x1/2+8.073x0.725x3/5-6.085x0.25 +(2.682+1.746)×5.787x1/2+2.682x0.542x1/2+4.746x0.406x1/2 +2.2x2.685-(3.99+4.325)×3.885x1/2=91.42㎡ 機電設備空間(3.99+4.325)×3.885x1/2=16.15㎡ 停車空間(5.317+8.204)/4×3.14159=35.89㎡ 小計143.46㎡
貳層	(6.55+8.073)×8.825x1/2+8.073x0.725x3/5-6.085x0.25 +2.682x2.2+2.835x3.635+(1.158+1.518)×2.925x1/2+(3.452+ +5.416)×5.505x1/2+5.416x0.464x1/2+3.452x0.745x1/2 +(3.84+8.61)/4×3.14159-1.224x1.37x1/2=144.84㎡ 機電設備空間(3.296+3.576)×3.205x1/2=11.01㎡ 停車空間(5.317+8.204)/4×3.14159=35.89㎡ 小計144.84㎡
參層	(6.55+8.073)×8.825x1/2+8.073x0.725x3/5-6.085x0.25 +2.868x3.635+(1.158+1.518)×2.925x1/2+5.868x1.756 -(3.296+3.576)×3.205x1/2=82.34㎡ 柱梁(4.17+3.9+1.69+4.06+1.69)×0.2+3.14159x0.2x0.2x5x1/2 +(0.215+6.32)/4×3.14159-(8.15+5.32)/4×3.14159 機電設備空間(3.296+3.576)×3.205x1/2=11.01㎡ 小計107.25㎡
肆層	(6.55+8.073)×8.825x1/2+8.073x0.725x3/5-6.085x0.25 +2.835x3.635+(1.158+1.518)×2.925x1/2+5.868x1.756 +5.868x1.162x1/2+0.325x1.756x1/2+1.756x0.724x3/5 +4x0.935=97.09㎡ 計入露台97.09+(5.63-9.71)=103.01㎡ 小計107.25㎡
屋頂突出物	2.175x2.5+2.9x3.7=16.17㎡ <18㎡ OK
總計	521.59㎡
新建建築面積	(6.55+8.073)×8.825x1/2+8.073x0.725x3/5-6.085x0.25 +(2.682+1.746)×5.787x1/2+2.682x0.542x1/2+4.746x0.406x1/2 +2.2x2.685-(3.99+4.325)×3.885x1/2+((5.84+8.61)/4)×3.14159 -1.224x1.37x1/2+4x0.935=152.10㎡
建築率	152.10/307.72=49.44% <60% OK
計入容積面積	91.42+(16.15-14.35)+150.20+108.75+103.01=455.18㎡
容積率	455.18/307.72=148/100 <150/100 OK
機電設備空間檢討	(3.99+4.325)×3.885x1/2=16.15㎡ >14.3, 46㎡/10=14.35㎡... (應小於該層樓地板面積21/10))
法定空地	152.10㎡x4/6=101.40㎡
總樓地板面積	143.46+150.20+108.75+103.01+16.17=521.59㎡
工程造價(元)	5000元/㎡×521.59㎡=2,608,000元
停車空間檢討	本案實際停車數量: 室內:1輛 合計:1輛

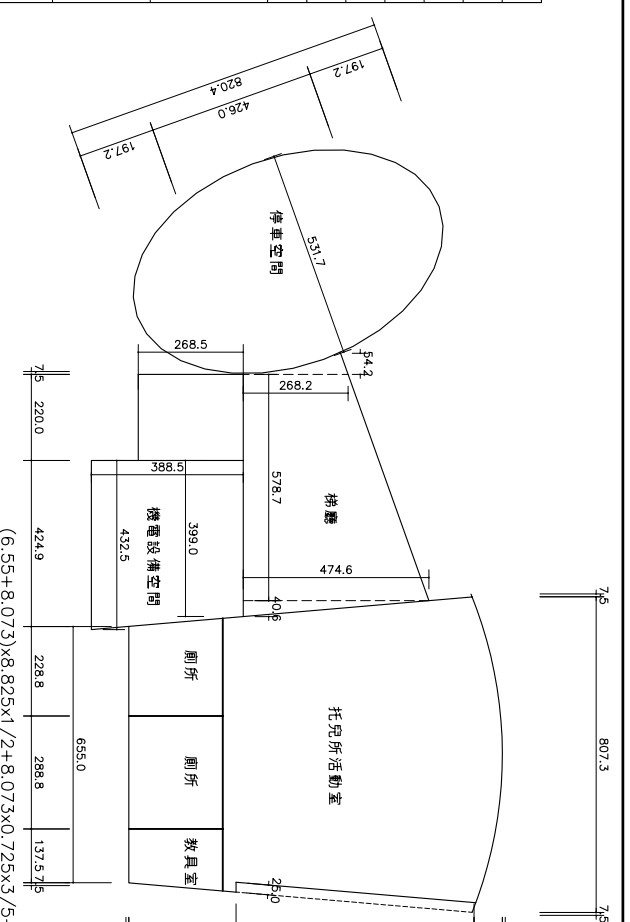
基地座落: 嘉義市竹村段560地號



6 地籍套繪圖
SCALE 1:500



7 配置圖
SCALE 1:500



1 壹層面積計算
SCALE 1:200

$$(6.55+8.073) \times 8.825 \times 1/2 + 8.073 \times 0.725 \times 3/5 - 6.085 \times 0.25$$

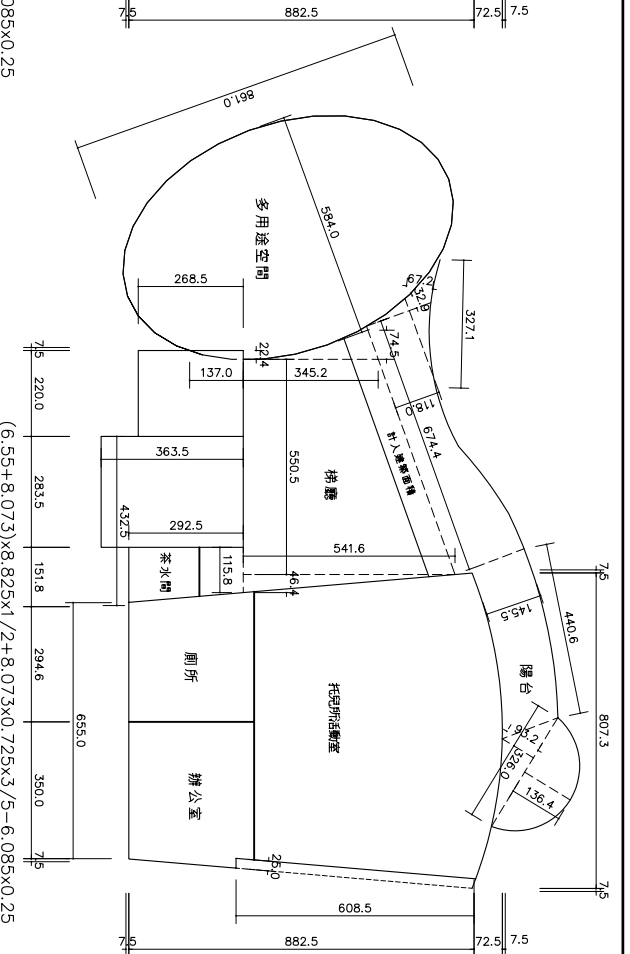
$$+ (2.682 + 1.746) \times 5.787 \times 1/2 + 2.682 \times 0.542 \times 1/2 + 4.746 \times 0.406 \times 1/2$$

$$+ 2.2 \times 2.685 - (3.99 + 4.325) \times 3.885 \times 1/2 = 91.42 \text{ m}^2$$

$$\text{機電設備空間} (3.99 + 4.325) \times 3.885 \times 1/2 = 16.15 \text{ m}^2$$

$$\text{停車空間} (5.317 + 8.204) / 4 \times 3.14159 = 35.89 \text{ m}^2$$

$$\text{小計} 143.46 \text{ m}^2$$



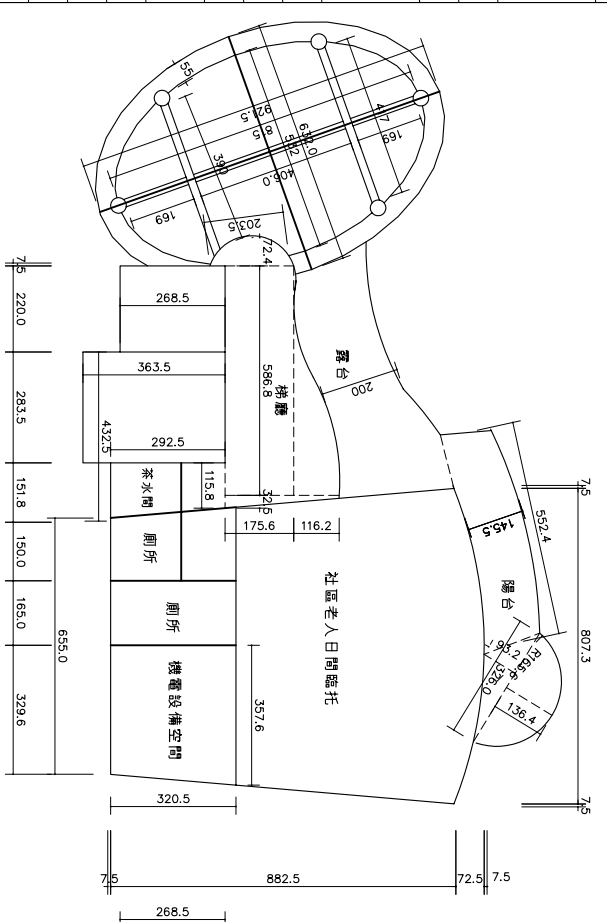
2 貳層面積計算
SCALE 1:200

$$(6.55+8.073) \times 8.825 \times 1/2 + 8.073 \times 0.725 \times 3/5 - 6.085 \times 0.25$$

$$+ 2.682 \times 2.2 + 2.835 \times 3.635 + (1.158 + 1.518) \times 2.925 \times 1/2 + (3.452 +$$

$$+ 5.416) \times 5.505 \times 1/2 + 5.416 \times 0.464 \times 1/2 + 3.452 \times 0.745 \times 1/2$$

$$+ ((5.84 + 8.61) / 4) \times 3.14159 - 1.224 \times 1.37 \times 1/2 = 144.84 \text{ m}^2$$



3 參層面積計算
SCALE 1:200

$$(6.55+8.073) \times 8.825 \times 1/2 + 8.073 \times 0.725 \times 3/5 + 2.682 \times 2.2$$

$$+ 2.835 \times 3.635 + (1.158 + 1.518) \times 2.925 \times 1/2 + 5.868 \times 1.756$$

$$+ 5.868 \times 1.162 \times 1/2 + 0.325 \times 1.756 \times 1/2 + 1.756 \times 0.724 \times 3/5$$

$$- (3.296 + 3.576) \times 3.205 \times 1/2 = 82.34 \text{ m}^2$$

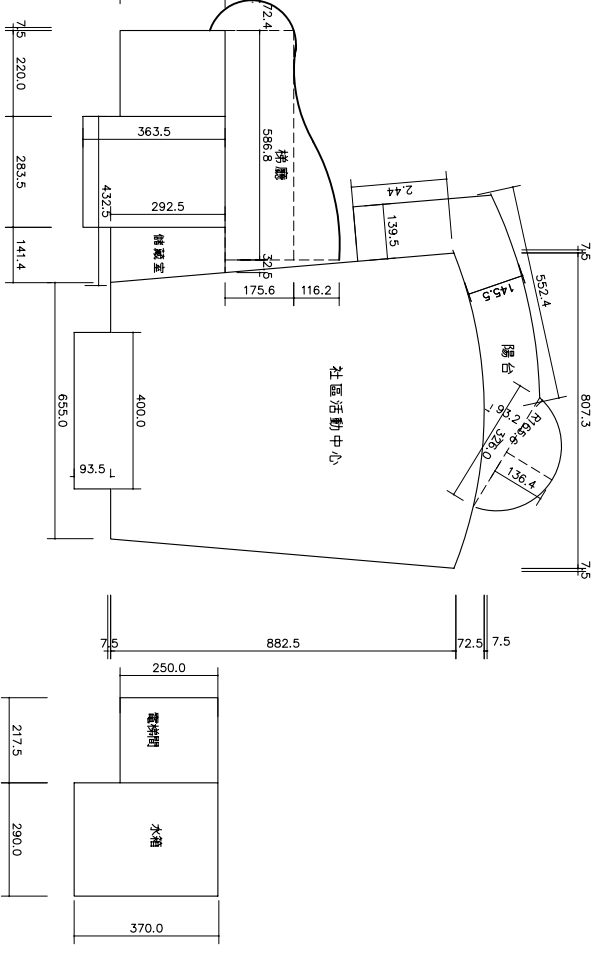
$$\text{柱梁} (4.17 + 3.9 + 1.69 + 4.06 + 1.69) \times 0.2 + 3.14159 \times 0.2 \times 0.2 \times 5 \times 1/2$$

$$+ (0.215 + 6.32) / 4 \times 3.14159 - (8.15 + 5.32) / 4 \times 3.14159$$

$$+ 2.035 \times 0.55 = 13.9 \text{ m}^2$$

$$\text{機電設備空間} (3.296 + 3.576) \times 3.205 \times 1/2 = 11.01 \text{ m}^2$$

$$\text{小計} 107.25 \text{ m}^2$$



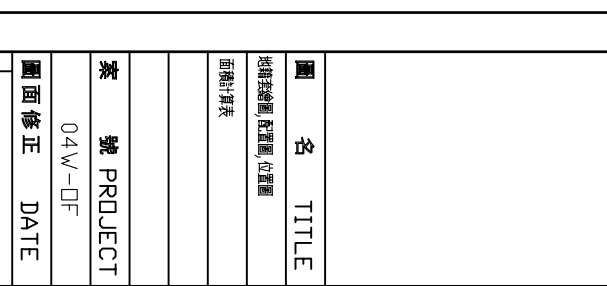
4 肆層面積計算
SCALE 1:200

$$(6.55+8.073) \times 8.825 \times 1/2 + 8.073 \times 0.725 \times 3/5 + 2.682 \times 2.2$$

$$+ 2.835 \times 3.635 + (1.158 + 1.518) \times 2.925 \times 1/2 + 5.868 \times 1.756$$

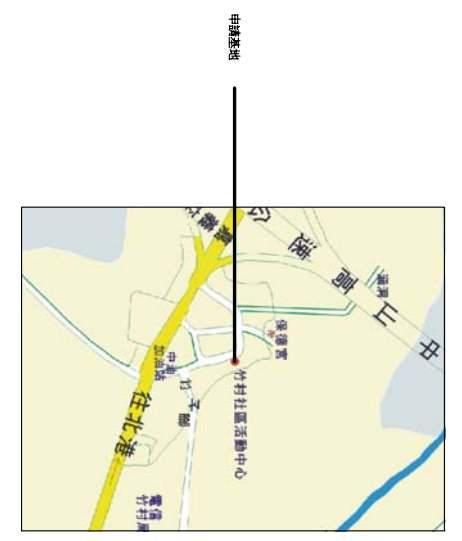
$$+ 5.868 \times 1.162 \times 1/2 + 0.325 \times 1.756 \times 1/2 + 1.756 \times 0.724 \times 3/5$$

$$+ 4 \times 0.935 = 97.09 \text{ m}^2$$



5 屋頂層面積計算
SCALE 1:200

$$2.175 \times 2.5 + 2.9 \times 3.7 = 16.17 \text{ m}^2$$



8 位置圖
SCALE 1:500

